



[ANIMAL HEALTH & WELFARE \(/ADVOCATE/CATEGORY/ANIMAL-HEALTH-WELFARE\)](#)

Global Aquaculture Advocate (EHP) » Global Aquaculture Advocate

Friday, 22 July 2016

By Jee Eun Han, Ph.D. , Kathy F.J. Tang, Ph.D. and Donald V. Lightner, Ph.D.

Global Aquaculture Advocate (EHP) » Global Aquaculture Advocate

*Editor's note: This article was originally published on the Advocate in English on **April 15, 2016***



Global Aquaculture Advocate (EHP) » Global Aquaculture Advocate

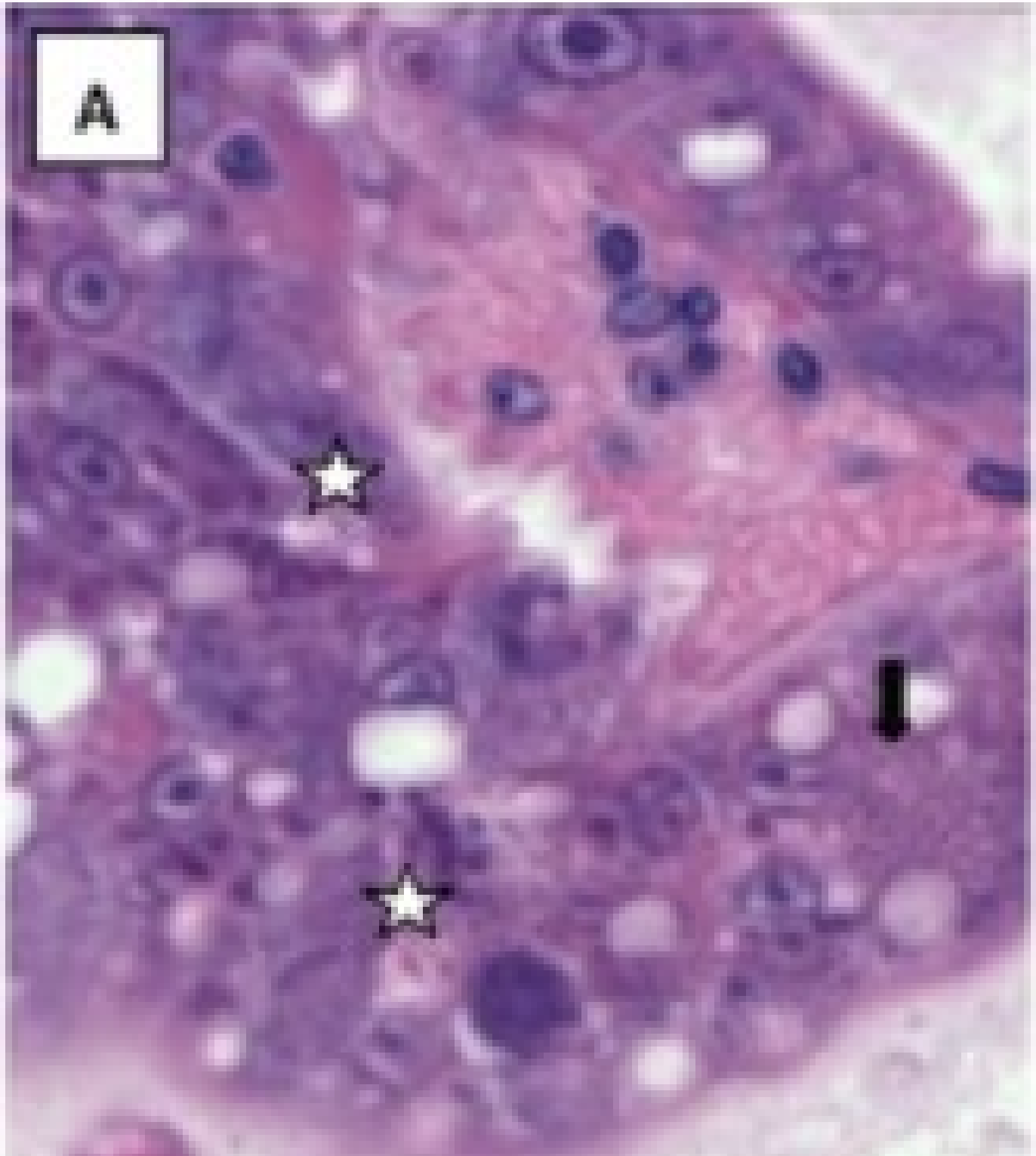
[\(https://www.aquaculturealliance.org/advocate/new-management-tools-for-ehp-in-penaeid-shrimp/\)](https://www.aquaculturealliance.org/advocate/new-management-tools-for-ehp-in-penaeid-shrimp/).

Global Aquaculture Advocate (EHP) » Global Aquaculture Advocate (EHP) » Global Aquaculture Advocate

Environmental Health Practice (EHP) Report

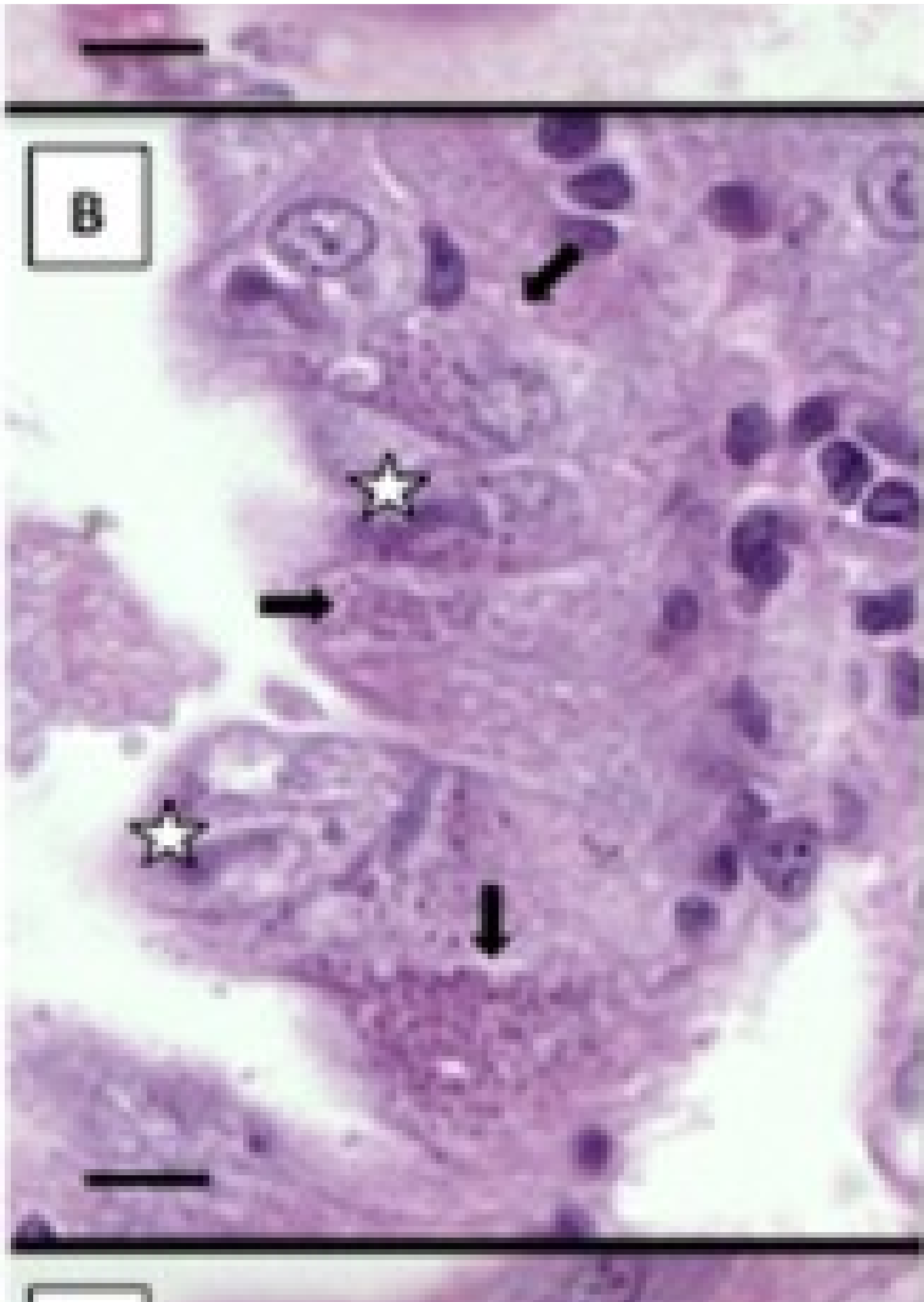
This report details the findings of an Environmental Health Practice (EHP) conducted in 2014, covering sections 1A & 1B. The findings are compared against the EHP standards established in 2006, specifically section 1C. The report is dated 2006.

Environmental Health Practice



h

%b3%95



h

%b3%9

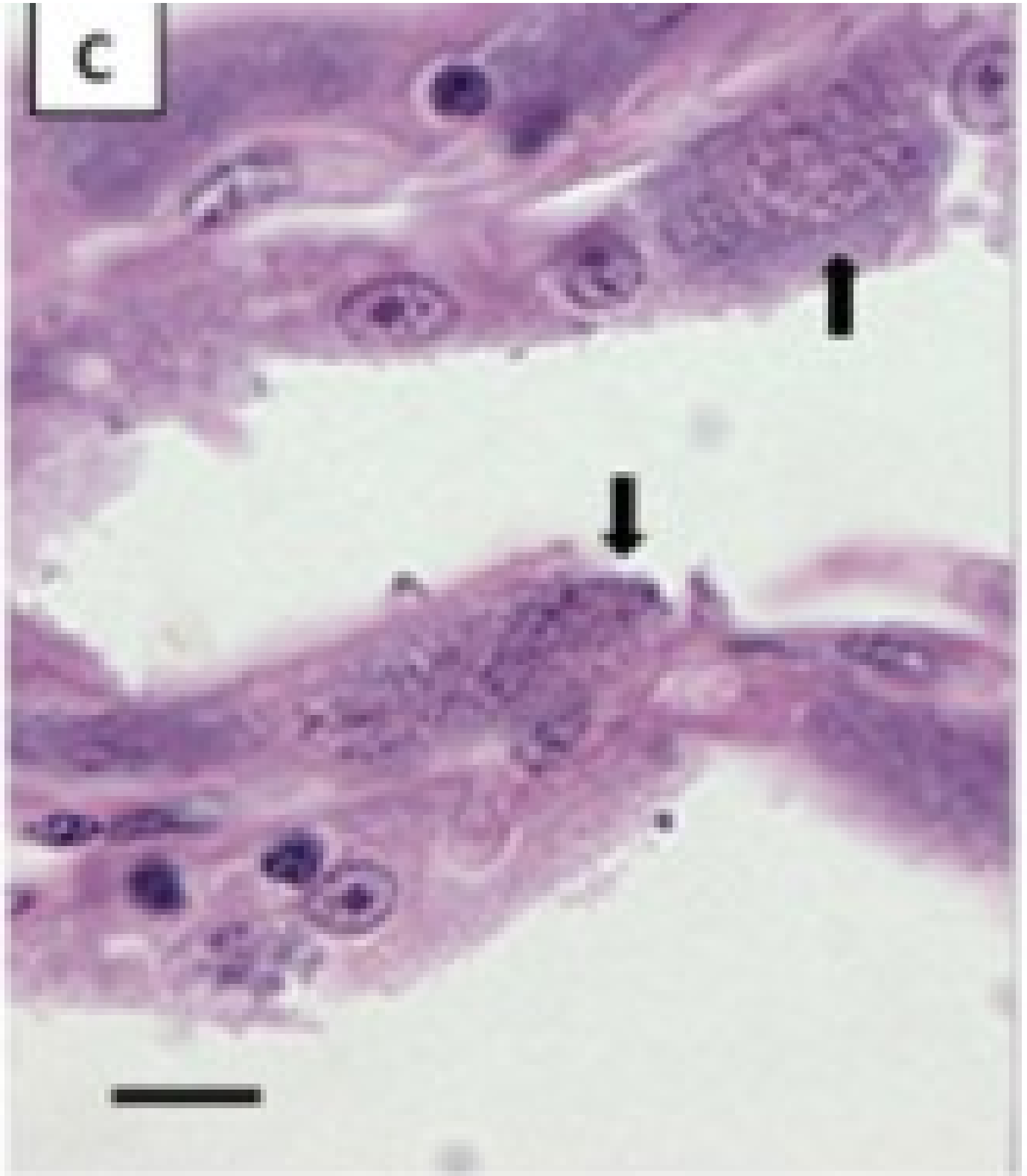
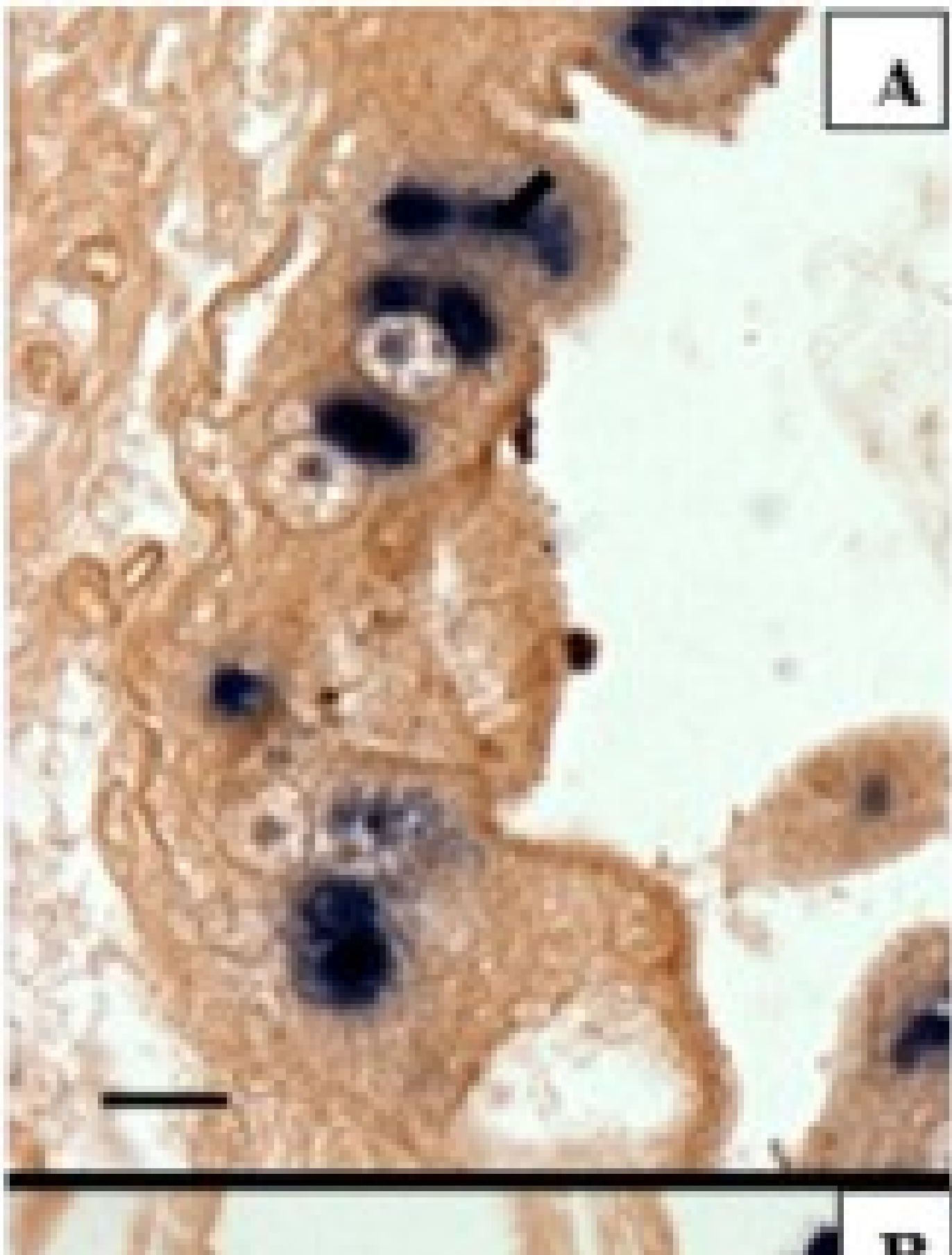


Figure 1. Histological sections of tissue from A&B and C. Scale bar = 25 μm.

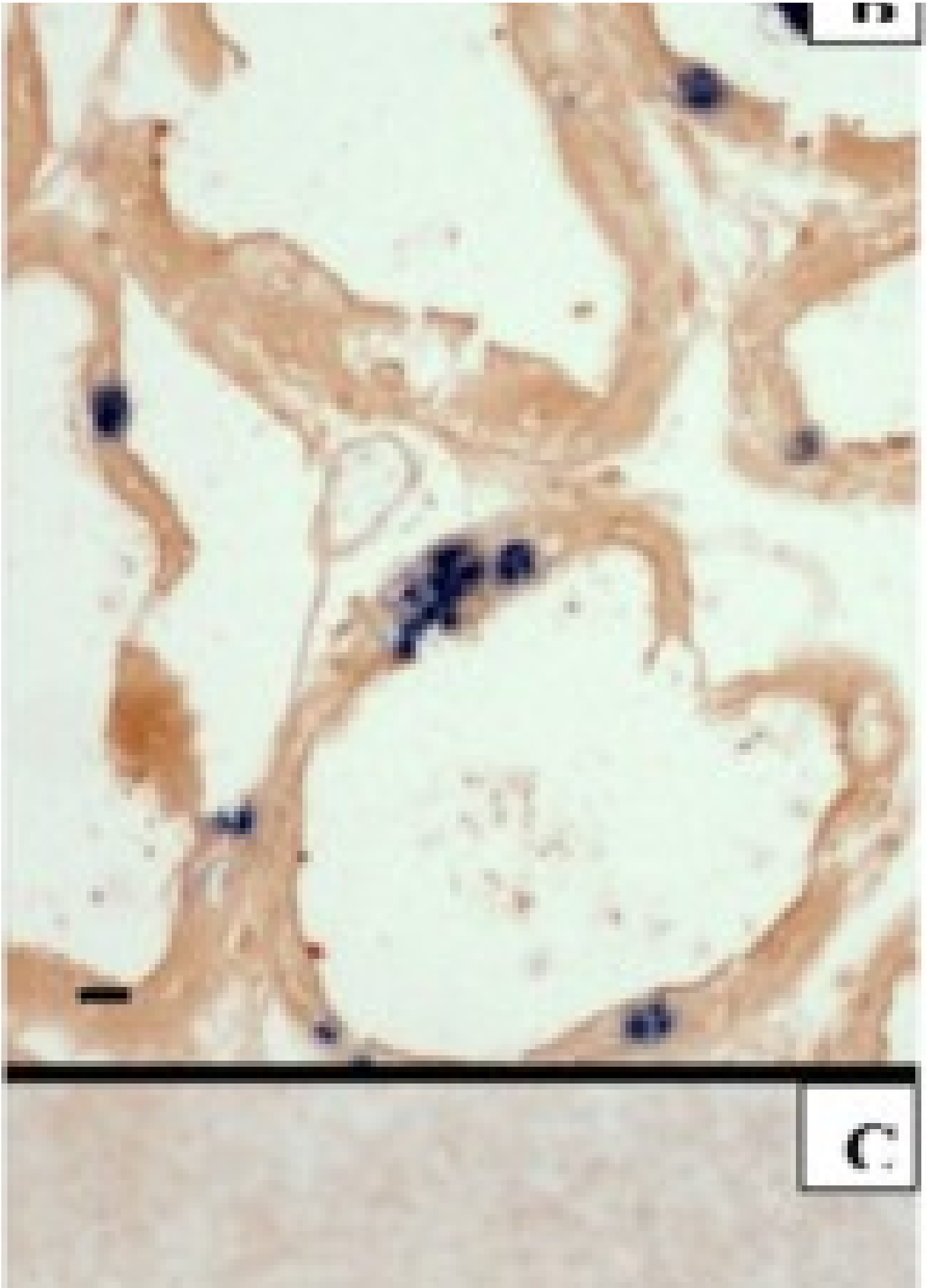
Primers for EHP-510F (5'-GCCTGAGAGATGGCTCCCACG) and EHP-510R (5'-GCGTACTATCCCAGAGCCCG) were used for DNA PCR. The products were analyzed by agarose gel electrophoresis. EHP-510F and EHP-510R were used for the detection of EHP in the tissue.

□□□□□□□□2□6-7□□□



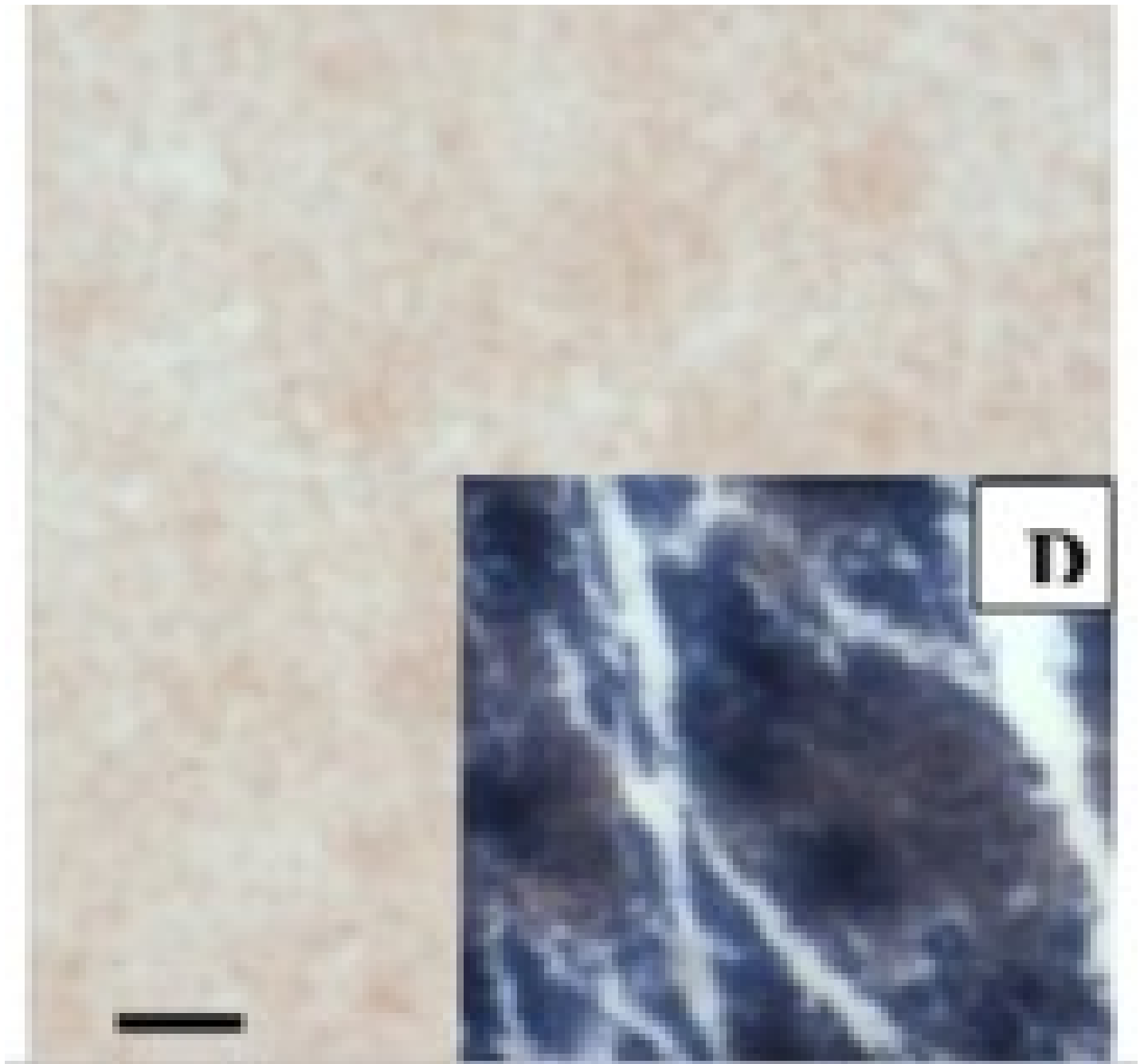
h

%b3%95



h

%b3%95



h

%b3%9

4. *Perezia penaei* (EHP) *Perezia penaei* (EHP) A *Perezia penaei* (EHP) B C D *Perezia penaei* 25 μ m

4/9 *Perezia penaei* (EHP) 29 *Perezia penaei* (EHP) 18S rRNA 99.9% *Perezia penaei* (EHP)

PCR

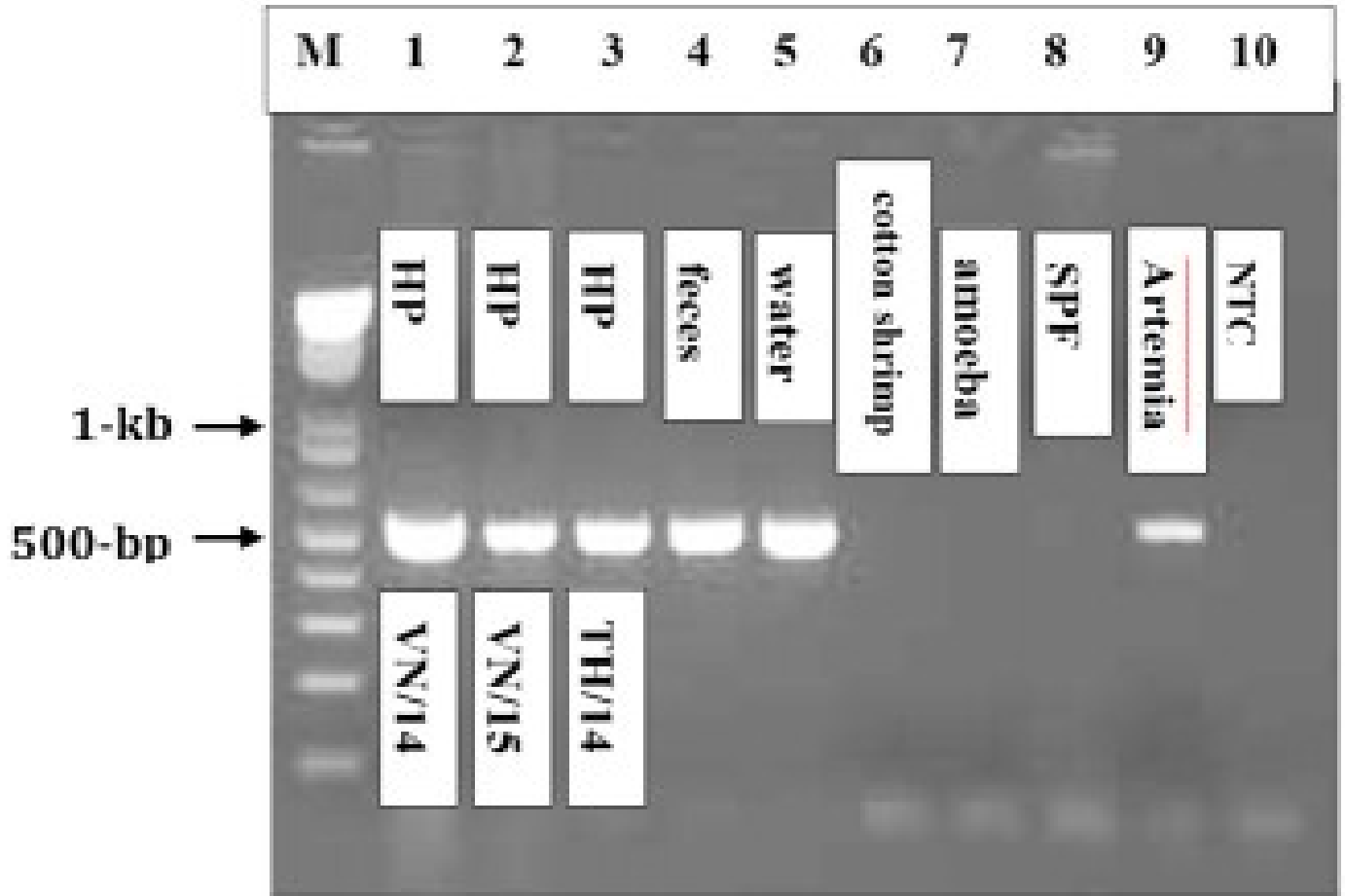
35 3A 42 3A PCR 15 3B EHP

Genetics

Genetics ISH

Genetics ISH 4A 4B 4C

Genetics

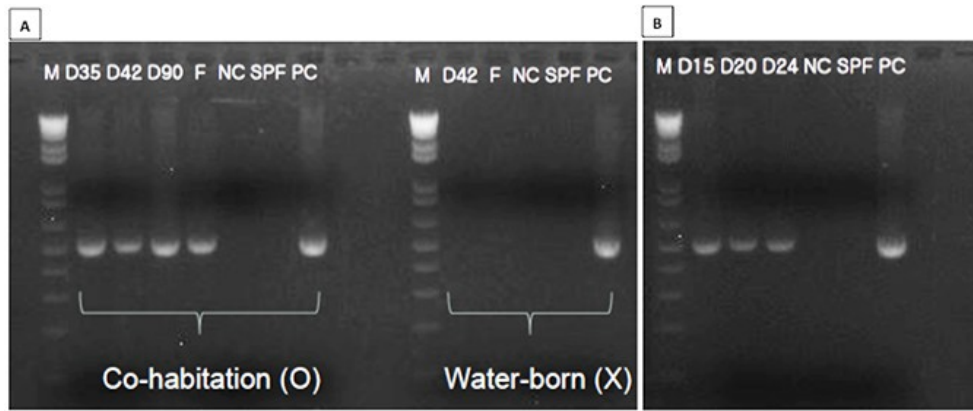


h

%b3%9

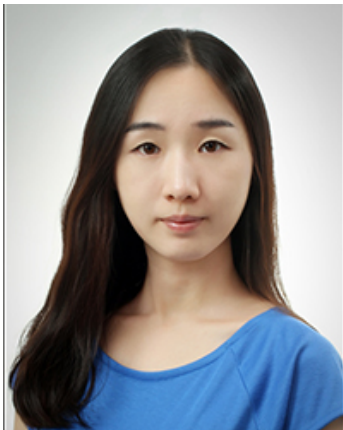
2. PCR products of EHP M: 1 kb ladder. Samples: 2014, 2015, 3-5, cotton shrimp, amoeba, SPP, Artemia, NTC. Bands at ~500 bp are observed for HP, feces, water, cotton shrimp, amoeba, SPP, and Artemia.

Genetics (EHP) 1010000 « Global Aquaculture Advocate. Genetics ISH 4A 4B 4C. PCR products of EHP M: 1 kb ladder. Samples: 2014, 2015, 3-5, cotton shrimp, amoeba, SPP, Artemia, NTC. Bands at ~500 bp are observed for HP, feces, water, cotton shrimp, amoeba, SPP, and Artemia.

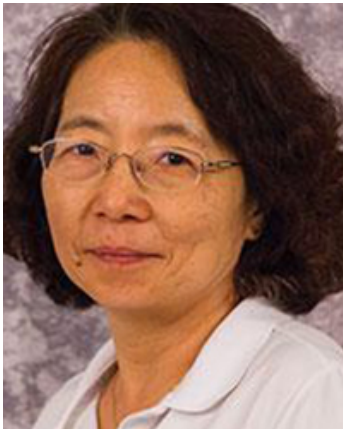


3 1 2 3 A 35 EHP
 B 15 EHP

Authors



JEE EUN HAN, PH.D.
 Postdoctoral Research Associate
 School of Animal and Comparative Biomedical Sciences
 University of Arizona
 Tucson, AZ 85721 USA
jeehan@u.arizona.edu (mailto:jeehan@u.arizona.edu)



KATHY F.J. TANG, PH.D.

Associate Research Professor
School of Animal and Comparative Biomedical Sciences
University of Arizona
Tucson, AZ 85721 USA

fengjyu@email.arizona.edu (<mailto:fengjyu@email.arizona.edu>).



DONALD V. LIGHTNER, PH.D.

Professor Emeritus
School of Animal and Comparative Biomedical Sciences,
University of Arizona,
Tucson, AZ 85721 USA

dvl@u.arizona.edu (<mailto:dvl@u.arizona.edu>).